

Headquarters Laboratory

P.O. Box 670
Collinsville, MS 39325
Office: (601) 626-1100
Fax: (601) 626-1122

**Florida Laboratory**

201 Douglas Avenue, Suite A
Dunedin, FL 34698
Office: (727) 253-4991
Fax (727) 953-7849

Ron Smith & Associates, Inc.**Testing Division**

Toll Free: 1-866-832-6772 | www.RonSmithandAssociates.com

Email: testing@ronsmithandassociates.com

Summary Report**Spring 2018 Tenprint Comparison Proficiency Test #18201****Issued: March 12, 2018**

On March 12, 2018, Ron Smith and Associates, Inc. (RS&A) shipped the 2018 Spring Tenprint Proficiency Test #18201. Participants were required to submit their responses no later than May 14, 2018, in order for them to be included in this summary report.

A total of 28 tests were ordered and shipped, with 25 participants returning their responses. This test consisted of four parts: pattern recognition, comparison of multiple tenprint cards (in two parts), and side-by-side comparisons of unknown to known fingerprints. It was provided in a hard copy and/or digital copy format.

The results presented in this report reflect whether or not the participants' submitted results agree or disagree with the assigned values, garnered from pre-distribution testing and outlined in ***The Manufacturer's Report*** (Appendix 1). The primary purpose of a Summary Report is to provide an overall documentation of all the submitted responses. It is RS&A's intention to go a step further and provide more meaningful statistical results by analyzing the submitted responses in relationship to the demographics obtained from each of the examiners participating in this proficiency test. All results and statistics for Test #18201 will be outlined through graphs and charts found in the remainder of this report.

Prior to distribution of this test, all of the expected responses were determined to be either "Identification" or "Exclusion"; however, we are aware that some agencies allow for a conclusion of "Inconclusive" in their casework. In designing this Proficiency Test, there was no intention to force a participant to render a conclusion which goes beyond their considered opinion. To satisfy this option, participants were allowed to enter "Inconclusive" as a response. Due to the fact that a participant's "Inconclusive" response does not meet the assigned values, it will appear as an inconsistent response in the summary report and be incorporated as such in the statistical analysis. It will be up to each agency to decide if the participant's "Inconclusive" response qualifies as being acceptable under their policies and procedures.

RS&A strives to maintain the confidentiality of all of its clients and participants. All results are obtained and published using randomly generated test codes. RS&A will not release the identity of any participant without the written consent of the participant and/or the agency involved.

For any additional information, please contact the Tenprint Proficiency Test Coordinator at testing@ronsmithandassociates.com or call toll free at 1-866-832-6772.

Appendix 1

Test Manufacturer's Information

Spring 2018 Tenprint Proficiency Test #18201

This test consisted of four parts: pattern recognition, comparison of multiple tenprint cards in two parts, and side-by-side comparisons of unknown to known fingerprints. The assigned values for each part of the test are as follows:

Part 1: Pattern Recognition

Image #	Pattern Type
1	Whorl
2	Right Slant Loop
3	Arch
4	Left Slant Loop
5	Right Slant Loop
6	Left Slant Loop
7	Whorl
8	Left Slant Loop
9	Arch
10	Whorl
11	Whorl
12	Left Slant Loop
13	Whorl
14	Arch
15	Right Slant Loop
16	Whorl
17	Left Slant Loop
18	Whorl
19	Right Slant Loop
20	Arch

Part 2: Pre-Sentencing Packet

The following are the fingerprints of the same person: (Select all that apply)

- ☒ Most Recent Conviction
- ☒ Prior Conviction #2

Part 3
Applicant Card/Criminal Card

What can you conclude about the fingerprints on the applicant card?

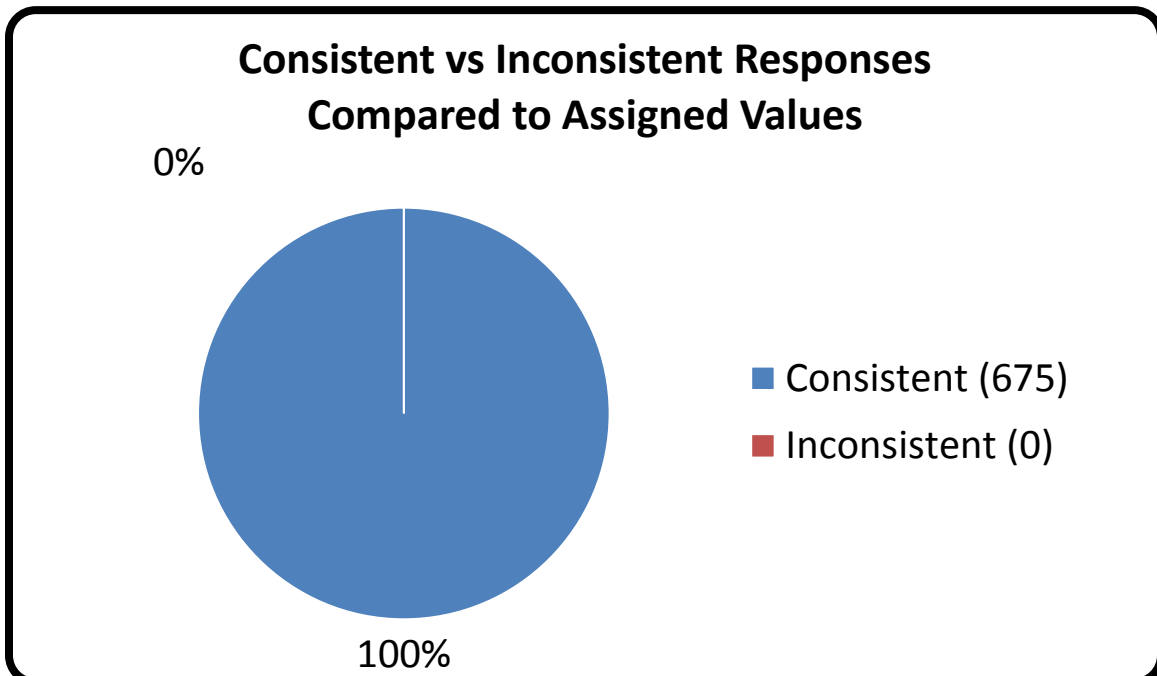
- X The fingerprints on the applicant card were made by the same person whose fingerprints appear on the criminal fingerprint card

Part 4: AFIS Side-by-Side Comparisons

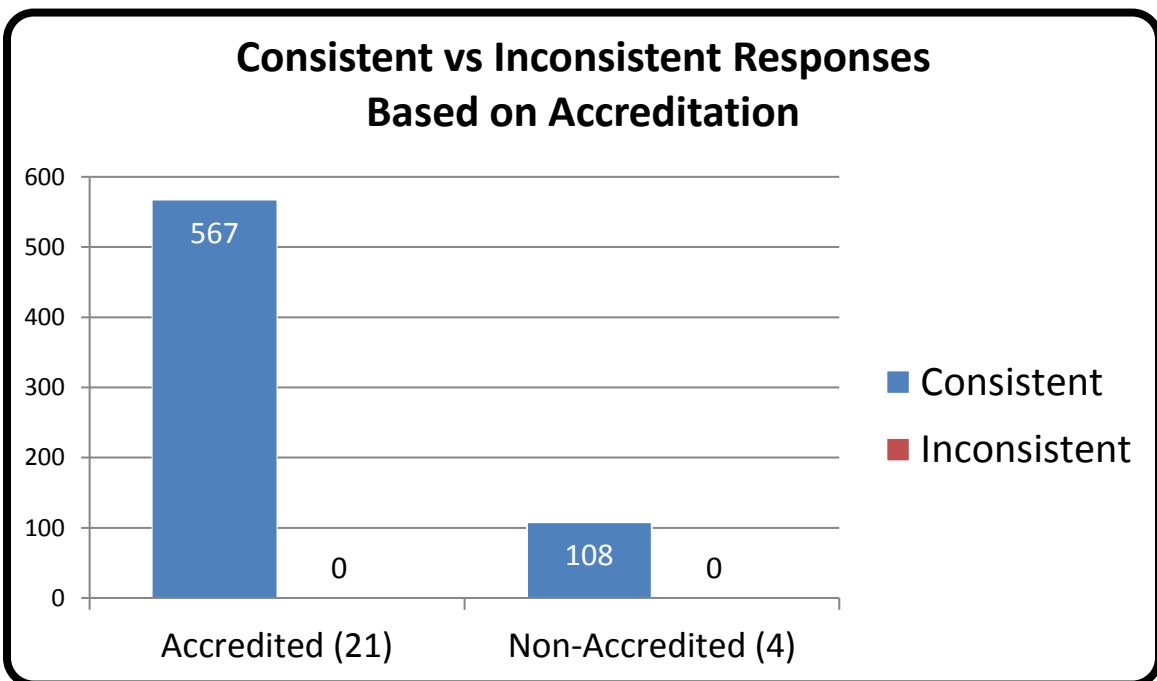
Comparison #	Conclusion
1	Identification
2	Exclusion
3	Exclusion
4	Identification
5	Exclusion

The test was provided in hard copy photograph and/or digital image formats. The assigned values were determined through the ground truth information and verified through unanimous agreement during pre-distribution testing.

Appendix 2



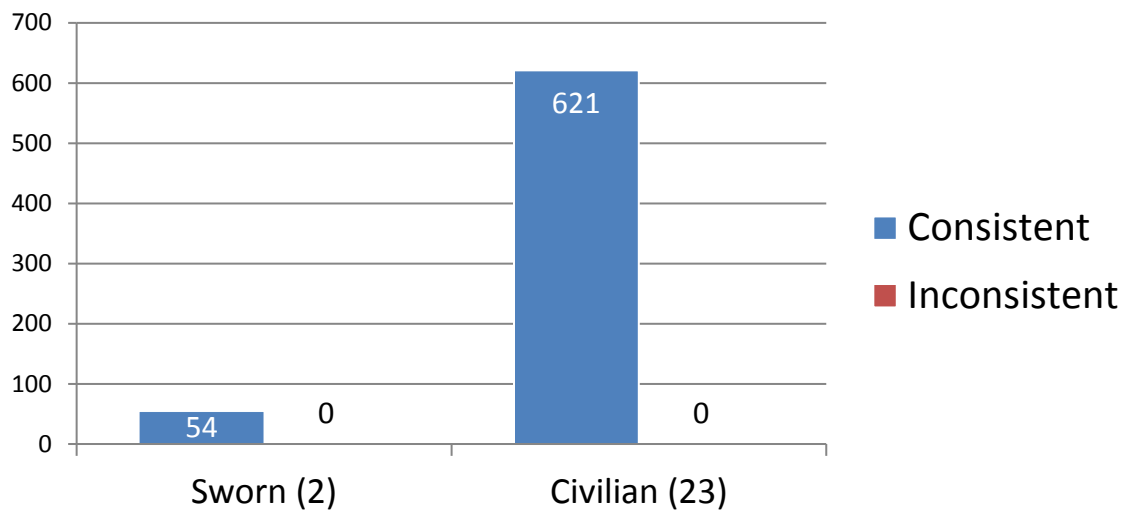
Appendix 3



*Numerical values shown are based on **25 participant submissions, each with 27 responses**, equaling **675 total responses**. *For further information, please read *Manufacturer's Additional Observations* on the final page of this report.

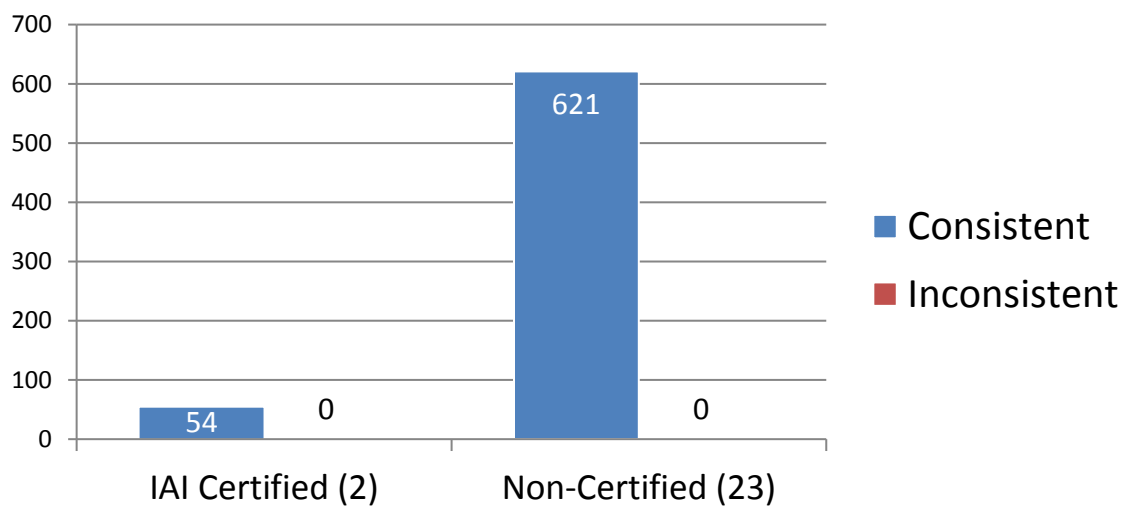
Appendix 4

Consistent vs Inconsistent Responses Based on Sworn or Civilian Status



Appendix 5

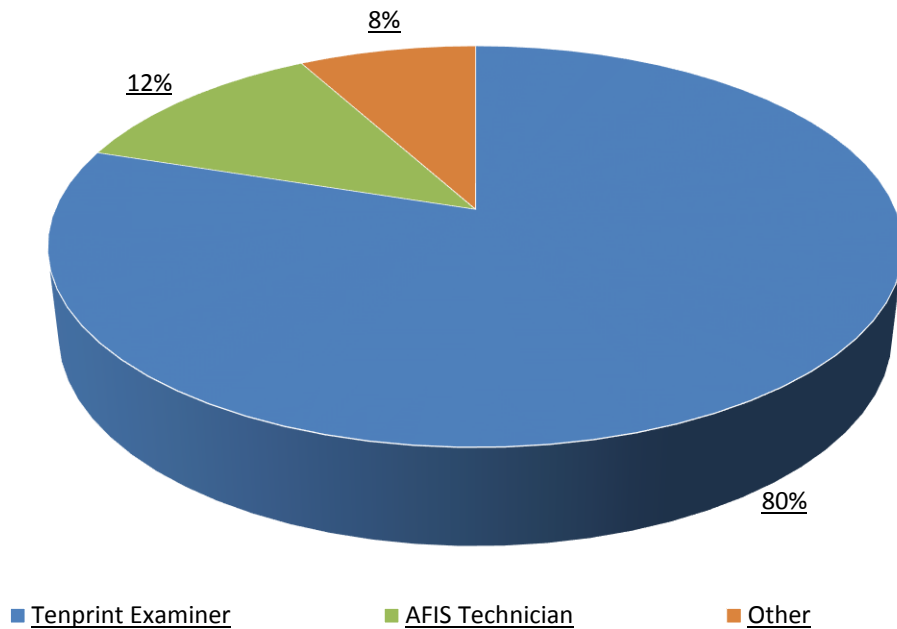
Consistent vs Inconsistent Responses Based on IAI Certification Status in Tenprint



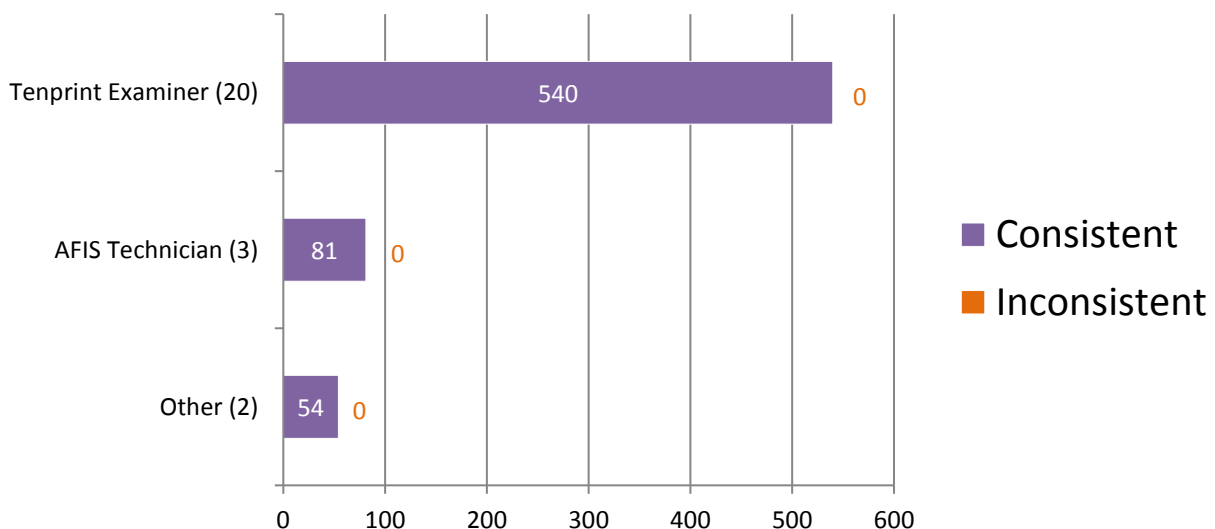
*Numerical values shown are based on **25 participant submissions, each with 27 responses**, equaling **675 total responses**. *For further information, please read *Manufacturer's Additional Observations* on the final page of this report.

Appendix 6

Percentage of Participants Based on Primary Job Position



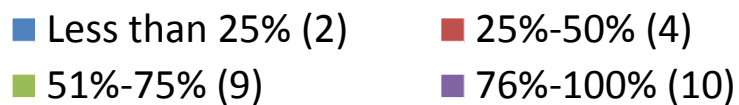
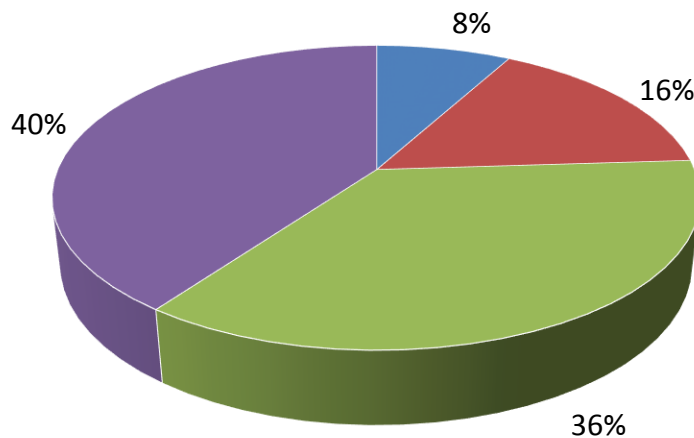
Consistent vs Inconsistent Responses Based on Primary Job Position



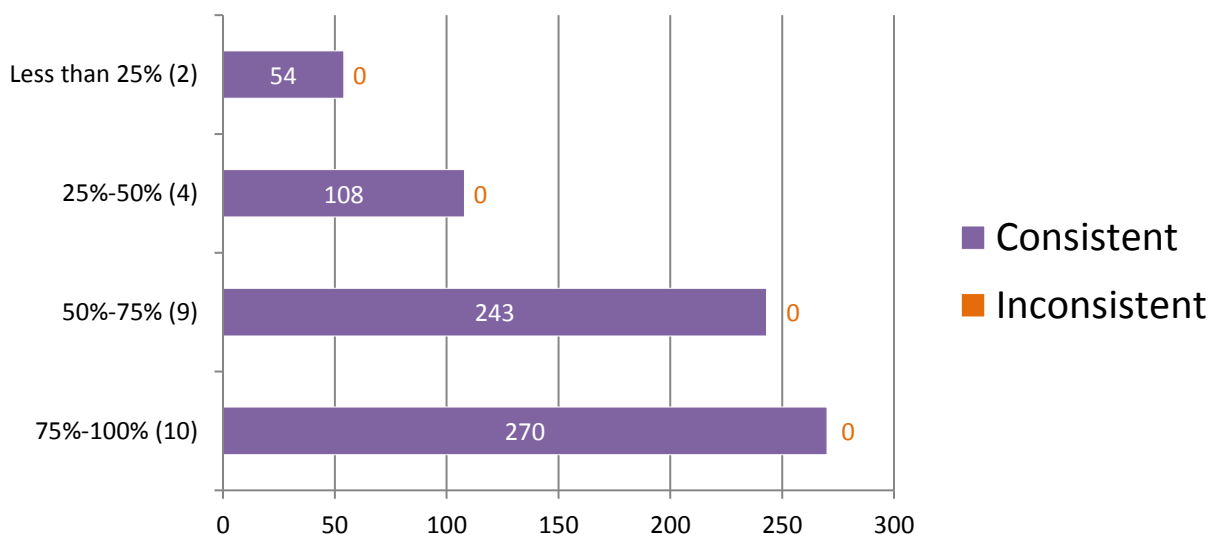
*Numerical values shown are based on **25 participant submissions, each with 27 responses**, equaling **675 total responses**. *For further information, please read *Manufacturer's Additional Observations* on the final page of this report.

Appendix 7

Percentage of Participants Based on Time Devoted to Tenprint Casework



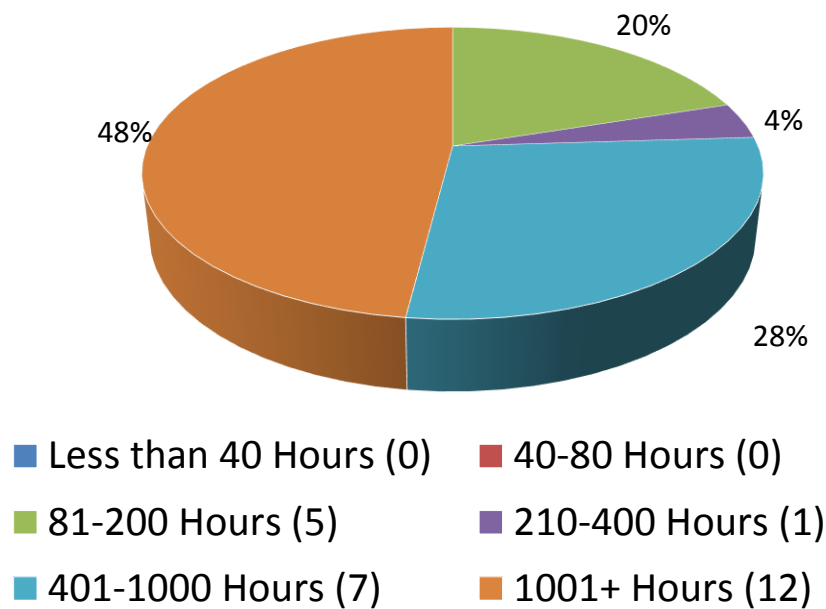
Consistent vs Inconsistent Responses Based on Time Devoted to Tenprint Casework



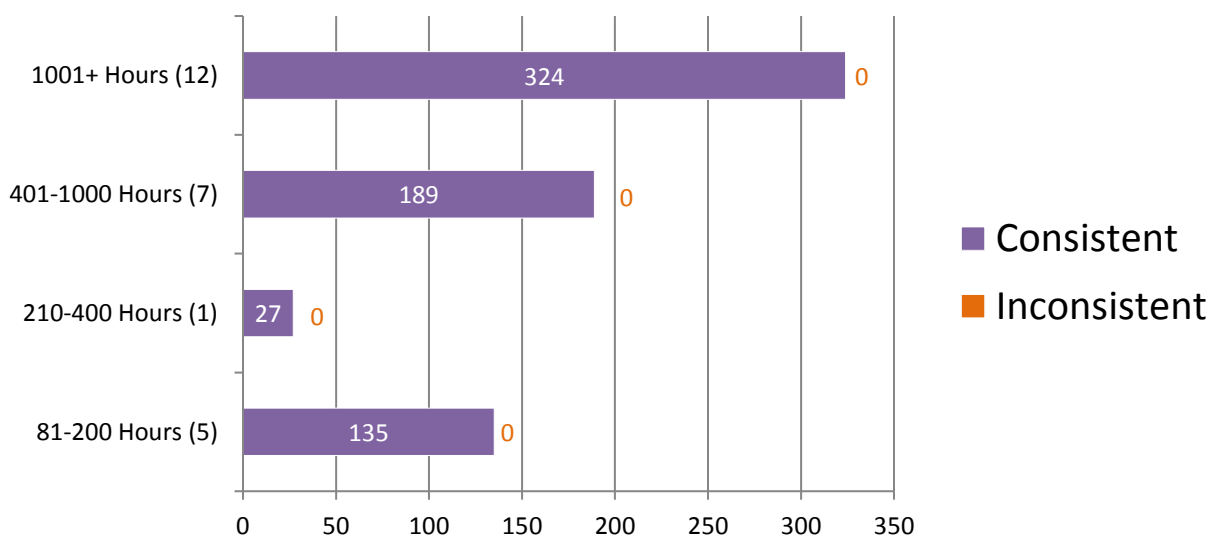
*Numerical values shown are based on **25 participant submissions, each with 27 responses**, equaling **675 total responses**. *For further information, please read *Manufacturer's Additional Observations* on the final page of this report.

Appendix 8

Percentage of Participants Based on Hours of Tenprint Training Completed



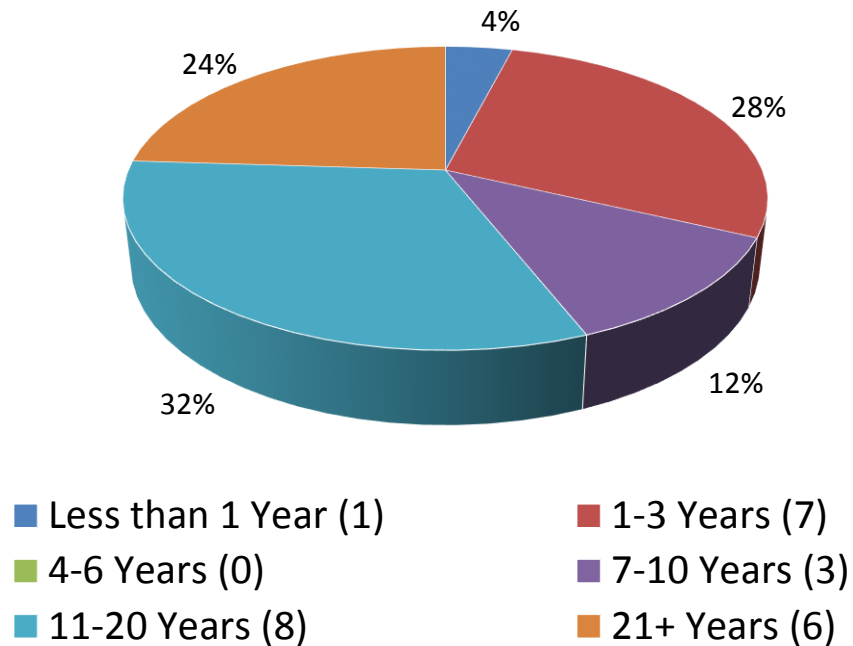
Consistent vs Inconsistent Responses Based on Hours of Tenprint Training Completed



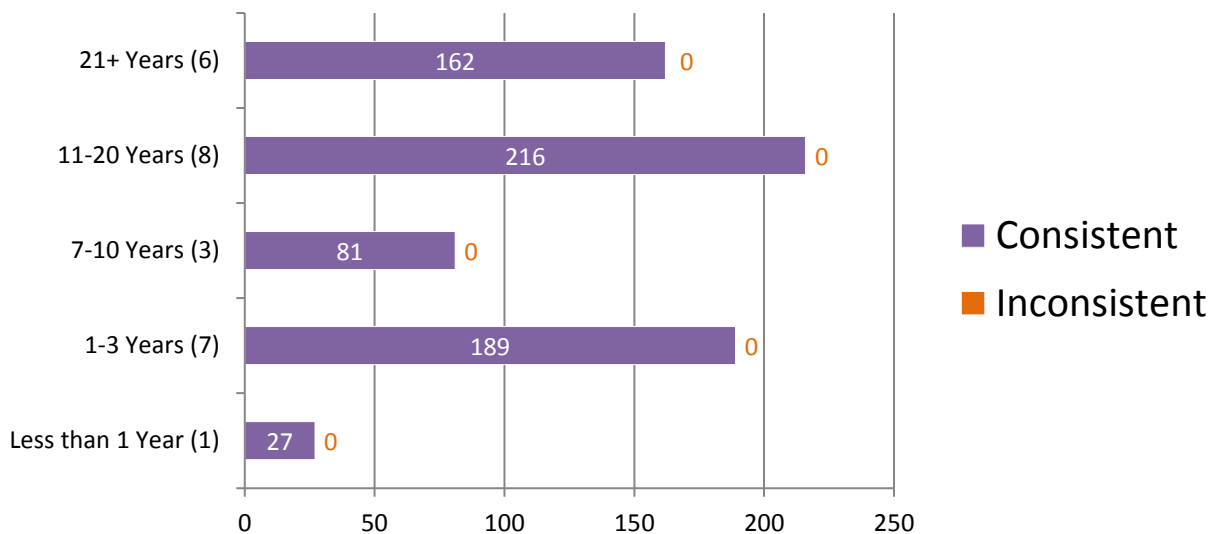
*Numerical values shown are based on **25 participant submissions, each with 27 responses**, equaling **675 total responses**. *For further information, please read *Manufacturer's Additional Observations* on the final page of this report.

Appendix 9

Percentage of Participants Based on Years of Experience in Tenprints



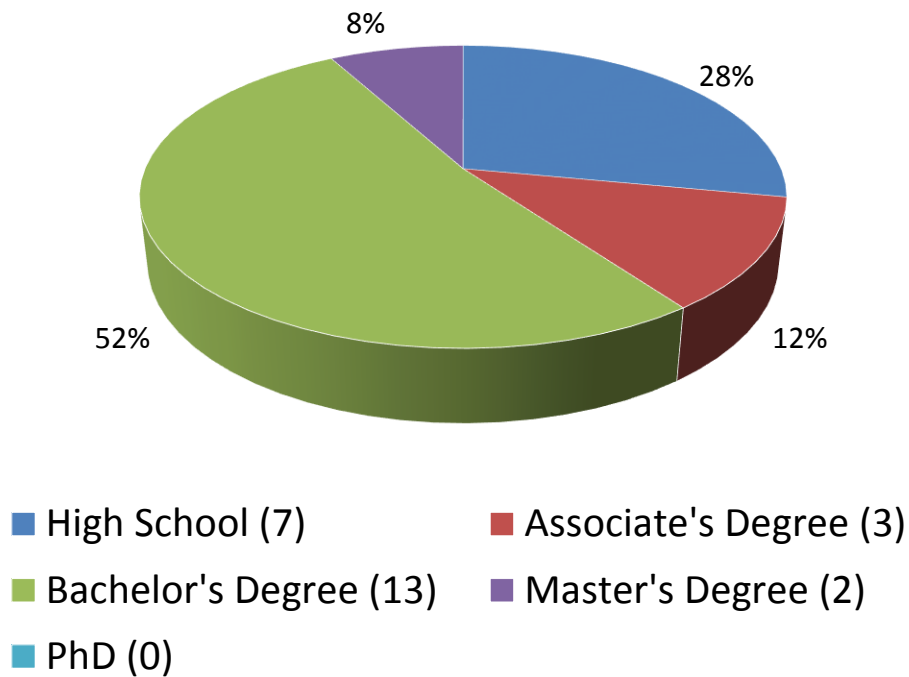
Consistent vs Inconsistent Responses Based on Years of Experience in Tenprints



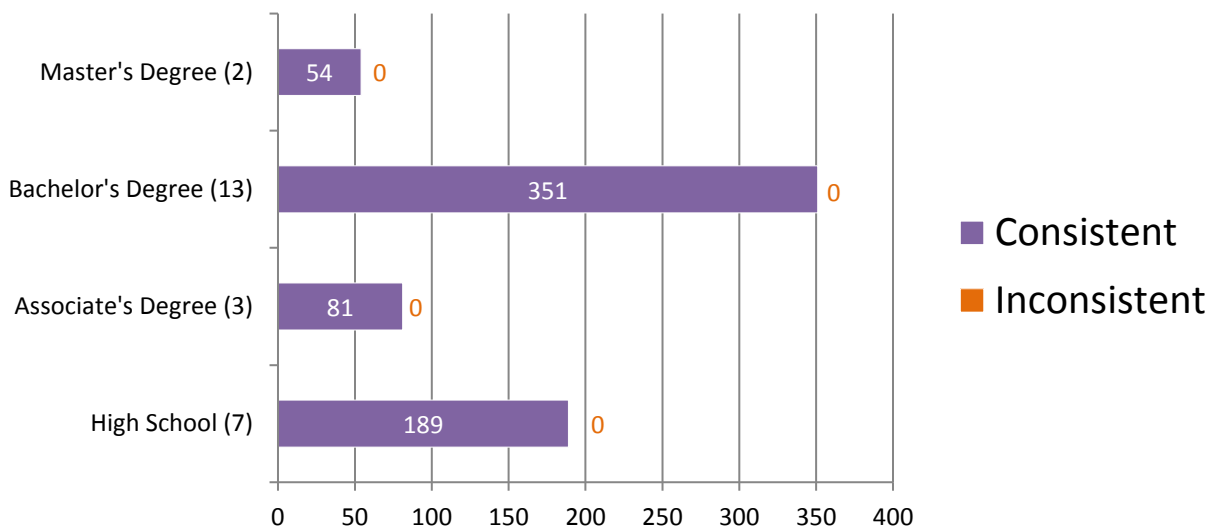
*Numerical values shown are based on **25 participant submissions, each with 27 responses**, equaling **675 total responses**. *For further information, please read *Manufacturer's Additional Observations* on the final page of this report.

Appendix 10

Percentage of Participants Based on Highest Level of Education Completed

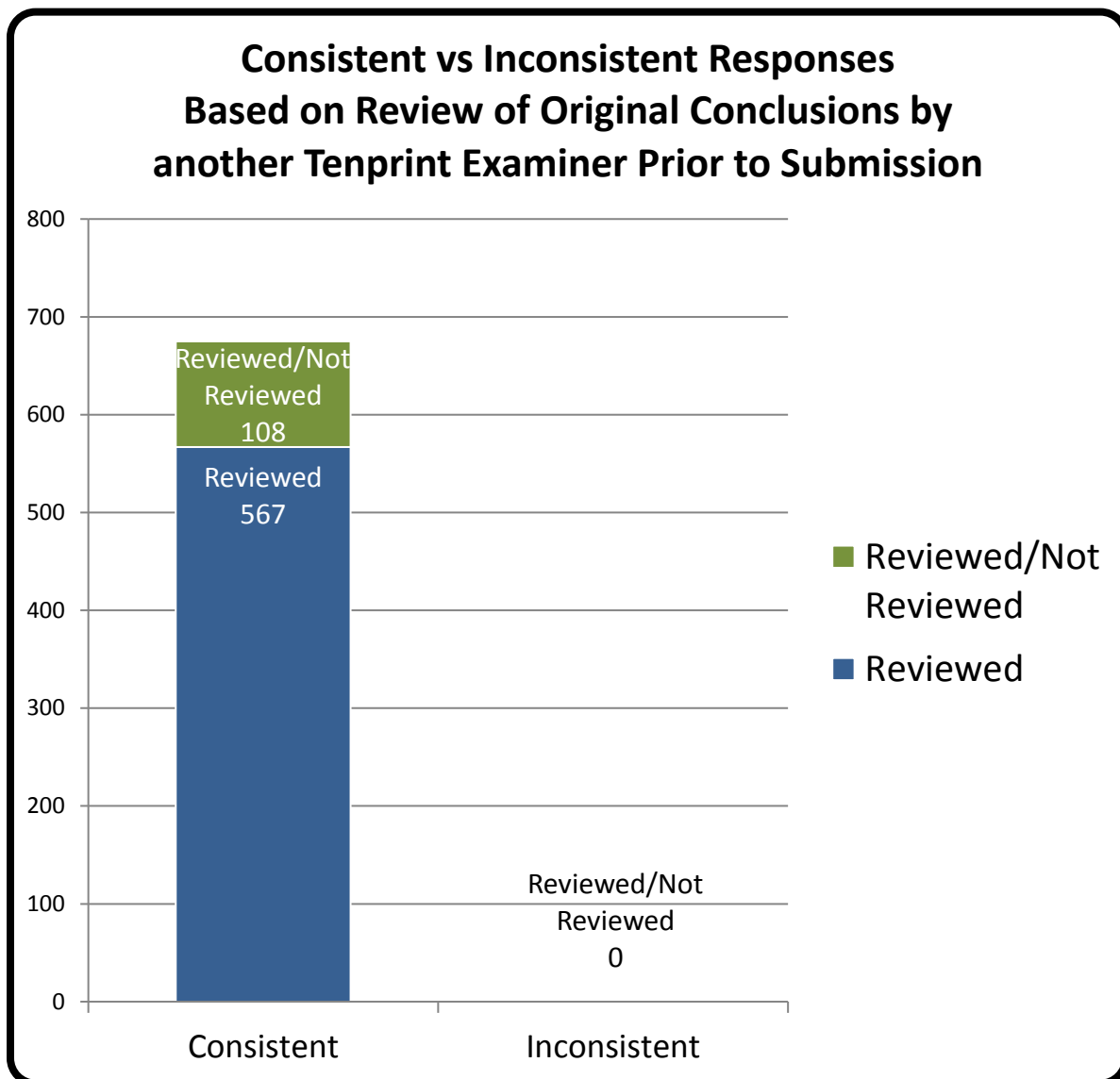


Consistent vs Inconsistent Responses Based on Highest Level of Education Completed



*Numerical values shown are based on **25 participant submissions, each with 27 responses**, equaling **675 total responses**. *For further information, please read *Manufacturer's Additional Observations* on the final page of this report.

Appendix 11



*Numerical values shown are based on **25 participant submissions, each with 27 responses**, equaling **675 total responses**. *For further information, please read *Manufacturer's Additional Observations* on the final page of this report.

Appendix 12

Participant Responses listed by Test Code

		Part 1																			
		1	2	3	4	5	6	7	8	9	10	11	12	13	14	15	16	17	18	19	20
	Assigned Values	W	RSL	A	LSL	RSL	LSL	W	LSL	A	W	W	LSL	W	A	RSL	W	LSL	W	RSL	A
Test Code	1581S18201	W	RSL	A	LSL	RSL	LSL	W	LSL	A	W	W	LSL	W	A	RSL	W	LSL	W	RSL	A
	2088J18201	W	RSL	A	LSL	RSL	LSL	W	LSL	A	W	W	LSL	W	A	RSL	W	LSL	W	RSL	A
	2449V18201	W	RSL	A	LSL	RSL	LSL	W	LSL	A	W	W	LSL	W	A	RSL	W	LSL	W	RSL	A
	250S18201	W	RSL	A	LSL	RSL	LSL	W	LSL	A	W	W	LSL	W	A	RSL	W	LSL	W	RSL	A
	2868D18201	W	RSL	A	LSL	RSL	LSL	W	LSL	A	W	W	LSL	W	A	RSL	W	LSL	W	RSL	A
	2905O18201	W	RSL	A	LSL	RSL	LSL	W	LSL	A	W	W	LSL	W	A	RSL	W	LSL	W	RSL	A
	5054I18201	W	RSL	A	LSL	RSL	LSL	W	LSL	A	W	W	LSL	W	A	RSL	W	LSL	W	RSL	A
	5213H18201	W	RSL	A	LSL	RSL	LSL	W	LSL	A	W	W	LSL	W	A	RSL	W	LSL	W	RSL	A
	5351Y18201	W	RSL	A	LSL	RSL	LSL	W	LSL	A	W	W	LSL	W	A	RSL	W	LSL	W	RSL	A
	5432S18201	W	RSL	A	LSL	RSL	LSL	W	LSL	A	W	W	LSL	W	A	RSL	W	LSL	W	RSL	A
	5553P18201	W	RSL	A	LSL	RSL	LSL	W	LSL	A	W	W	LSL	W	A	RSL	W	LSL	W	RSL	A
	5971W18201	W	RSL	A	LSL	RSL	LSL	W	LSL	A	W	W	LSL	W	A	RSL	W	LSL	W	RSL	A
	6134H18201	W	RSL	A	LSL	RSL	LSL	W	LSL	A	W	W	LSL	W	A	RSL	W	LSL	W	RSL	A
	6239T18201	W	RSL	A	LSL	RSL	LSL	W	LSL	A	W	W	LSL	W	A	RSL	W	LSL	W	RSL	A
	6266A18201	W	RSL	A	LSL	RSL	LSL	W	LSL	A	W	W	LSL	W	A	RSL	W	LSL	W	RSL	A
	6874I18201	W	RSL	A	LSL	RSL	LSL	W	LSL	A	W	W	LSL	W	A	RSL	W	LSL	W	RSL	A
	7196G18201	W	RSL	A	LSL	RSL	LSL	W	LSL	A	W	W	LSL	W	A	RSL	W	LSL	W	RSL	A
	7262O18201	W	RSL	A	LSL	RSL	LSL	W	LSL	A	W	W	LSL	W	A	RSL	W	LSL	W	RSL	A
	7550C18201	W	RSL	A	LSL	RSL	LSL	W	LSL	A	W	W	LSL	W	A	RSL	W	LSL	W	RSL	A
	757R18201	W	RSL	A	LSL	RSL	LSL	W	LSL	A	W	W	LSL	W	A	RSL	W	LSL	W	RSL	A
	7660S18201	W	RSL	A	LSL	RSL	LSL	W	LSL	A	W	W	LSL	W	A	RSL	W	LSL	W	RSL	A
	7980I18201	W	RSL	A	LSL	RSL	LSL	W	LSL	A	W	W	LSL	W	A	RSL	W	LSL	W	RSL	A
	887I18201	W	RSL	A	LSL	RSL	LSL	W	LSL	A	W	W	LSL	W	A	RSL	W	LSL	W	RSL	A
	9313P18201	W	RSL	A	LSL	RSL	LSL	W	LSL	A	W	W	LSL	W	A	RSL	W	LSL	W	RSL	A
	9469H18201	W	RSL	A	LSL	RSL	LSL	W	LSL	A	W	W	LSL	W	A	RSL	W	LSL	W	RSL	A

		Part 2	Part 3	Part 4				
		Pre-Sentencing	Applicant Card	1	2	3	4	5
Test Code	Assigned Values	MRC & PC2	AC & CC	ID	EXC	EXC	ID	EXC
	1581S18201	MRC & PC2	AC & CC	ID	EXC	EXC	ID	EXC
	2088J18201	MRC & PC2	AC & CC	ID	EXC	EXC	ID	EXC
	2449V18201	MRC & PC2	AC & CC	ID	EXC	EXC	ID	EXC
	250S18201	MRC & PC2	AC & CC	ID	EXC	EXC	ID	EXC
	2868D18201	MRC & PC2	AC & CC	ID	EXC	EXC	ID	EXC
	2905O18201	MRC & PC2	AC & CC	ID	EXC	EXC	ID	EXC
	5054I18201	MRC & PC2	AC & CC	ID	EXC	EXC	ID	EXC
	5213H18201	MRC & PC2	AC & CC	ID	EXC	EXC	ID	EXC
	5351Y18201	MRC & PC2	AC & CC	ID	EXC	EXC	ID	EXC
	5432S18201	MRC & PC2	AC & CC	ID	EXC	EXC	ID	EXC
	5553P18201	MRC & PC2	AC & CC	ID	EXC	EXC	ID	EXC
	5971W18201	MRC & PC2	AC & CC	ID	EXC	EXC	ID	EXC
	6134H18201	MRC & PC2	AC & CC	ID	EXC	EXC	ID	EXC
	6239T18201	MRC & PC2	AC & CC	ID	EXC	EXC	ID	EXC
	6266A18201	MRC & PC2	AC & CC	ID	EXC	EXC	ID	EXC
	6874I18201	MRC & PC2	AC & CC	ID	EXC	EXC	ID	EXC
	7196G18201	MRC & PC2	AC & CC	ID	EXC	EXC	ID	EXC
	7262O18201	MRC & PC2	AC & CC	ID	EXC	EXC	ID	EXC
	7550C18201	MRC & PC2	AC & CC	ID	EXC	EXC	ID	EXC
	757R18201	MRC & PC2	AC & CC	ID	EXC	EXC	ID	EXC
	7660S18201	MRC & PC2	AC & CC	ID	EXC	EXC	ID	EXC
	7980I18201	MRC & PC2	AC & CC	ID	EXC	EXC	ID	EXC
	887I18201	MRC & PC2	AC & CC	ID	EXC	EXC	ID	EXC
	9313P18201	MRC & PC2	AC & CC	ID	EXC	EXC	ID	EXC
	9469H18201	MRC & PC2	AC & CC	ID	EXC	EXC	ID	EXC

Arch=A, Right Slant Loop=RSL, Left Slant Loop=LSL, Whorl=W, Most Recent Conviction=MRC, Prior Conviction #1=PC1, Prior Conviction #2=PC2, Applicant Card = AC, Criminal Card = CC, Identification=ID, Exclusion=EXC, Inconclusive=INC, None of the above=None

Totals

	Part 1																			
	1	2	3	4	5	6	7	8	9	10	11	12	13	14	15	16	17	18	19	20
Assigned Values	W	RSL	A	LSL	RSL	LSL	W	LSL	A	W	W	LSL	W	A	RSL	W	LSL	W	RSL	A
Consistent Responses	25	25	25	25	25	25	25	25	25	25	25	25	25	25	25	25	25	25	25	25
Inconsistent Responses	0	0	0	0	0	0	0	0	0	0	0	0	0	0	0	0	0	0	0	0
Percentage of Consistent Responses	100	100	100	100	100	100	100	100	100	100	100	100	100	100	100	100	100	100	100	100

	Part 2	Part 3	Part 4				
	Pre-Sentencing	Applicant Card	1	2	3	4	5
Assigned Values	MRC & PC2	AC & CC	ID	EXC	EXC	ID	EXC
Consistent Responses	25	25	25	25	25	25	25
Inconsistent Responses	0	0	0	0	0	0	0
Percentage of Consistent Responses	100	100	100	100	100	100	100

Participant's Additional Comments

Test ID	Comments
2868D18201	The heading for Part 3 is listed as "Fraudulent Checks" on the Web Portal results form but listed as "Applicant/Criminal Card" on the printed Test Instructions page 7 of 8.
2905O18201	I believe the exam needs more variety in the side by side comparisons.

Manufacturer's Additional Observations

- Regardless of accreditation status, civilian or sworn status, IAI certification status, primary job position, the amount of time devoted to Tenprint examination, the number of hours of formal training in Tenprint examination, the years of experience, the level of education or participants' having their responses reviewed prior to submission; participants performed equally well on the test.

Authorized by:



Ron Smith, President
June 20, 2018

Issue Date:

June 20, 2018